

Florence Road Wimbledon, SW19 8TH

£1,265,000 Freehold



A truly stunning example of a modern House located within the ever-popular South Park Gardens area of Wimbledon offering three double bedrooms, three bathrooms, a large open plan kitchen/diner with bi-folding doors opening onto a landscaped private garden with integrated irrigation system and complete with garden room/home office. With nearly 1400 sq/ft of living space the house has been finished to the highest of specifications, is close to the extremely sought-after Holy Trinity School and fantastic commuter options. Further benefits include a master bedroom with en-suite and walk-in-wardrobe, downstairs w/c, separate living room, and fitted utility room.

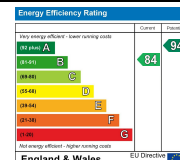
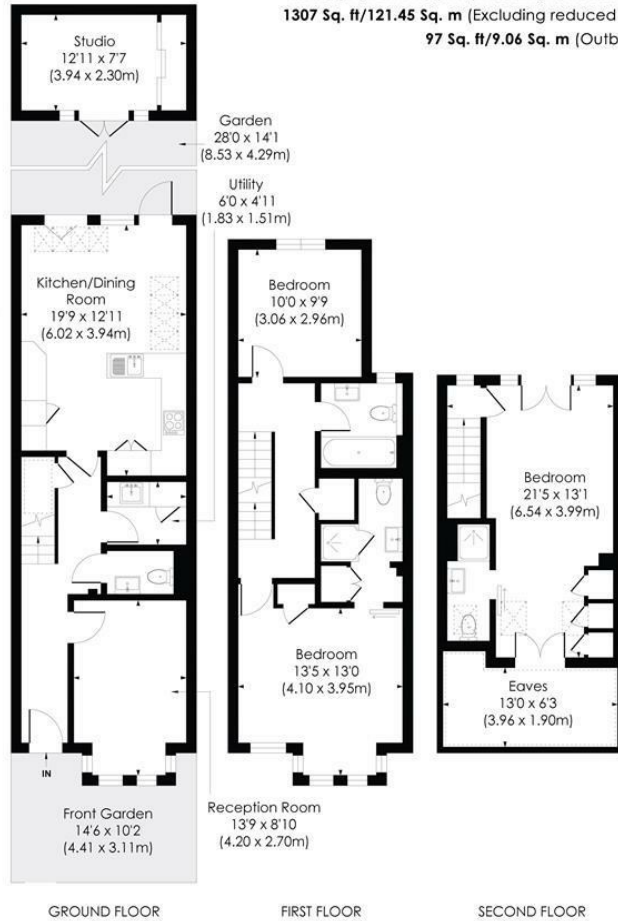
FLORENCE ROAD, SW19

Approx. Gross Internal Floor Area

1396 Sq. ft/129.74 Sq. m (Including reduced height)

1307 Sq. ft/121.45 Sq. m (Excluding reduced height)

97 Sq. ft/9.06 Sq. m (Outbuilding)



pixangle
PROPERTY MARKETING

This floor plan has been prepared for the purpose of illustration only in accordance with the latest RICS code of measuring practice and is not to scale. All measurements and areas are approximate and whilst every effort has been made to ensure the accuracy of the plan contained here, no responsibility is taken for any error, omission or misstatement.

© Pixangle Property Marketing Ltd. info@pixangle.com Tel: 0208 870 2118

- South Park Gardens
- Modern Construction (2016)
- Three Double Bedrooms
- Three bathrooms
- Landscaped Garden with Irrigation System
- Priority Catchment for Sought after Local Schools
- Home Office/Garden Room
- Excellent Transport Links
- EPC Rating B
- Council Tax Band F

For Free Mortgage Quote and Best Mortgage Rates, call an Ellisons Mortgage Advisor on 020 8944 9494



Although these particulars are believed to be correct, their accuracy is not guaranteed and they do not form part of any contract.

Celebrating 30 years
of successful Sales and
Lettings in Merton

